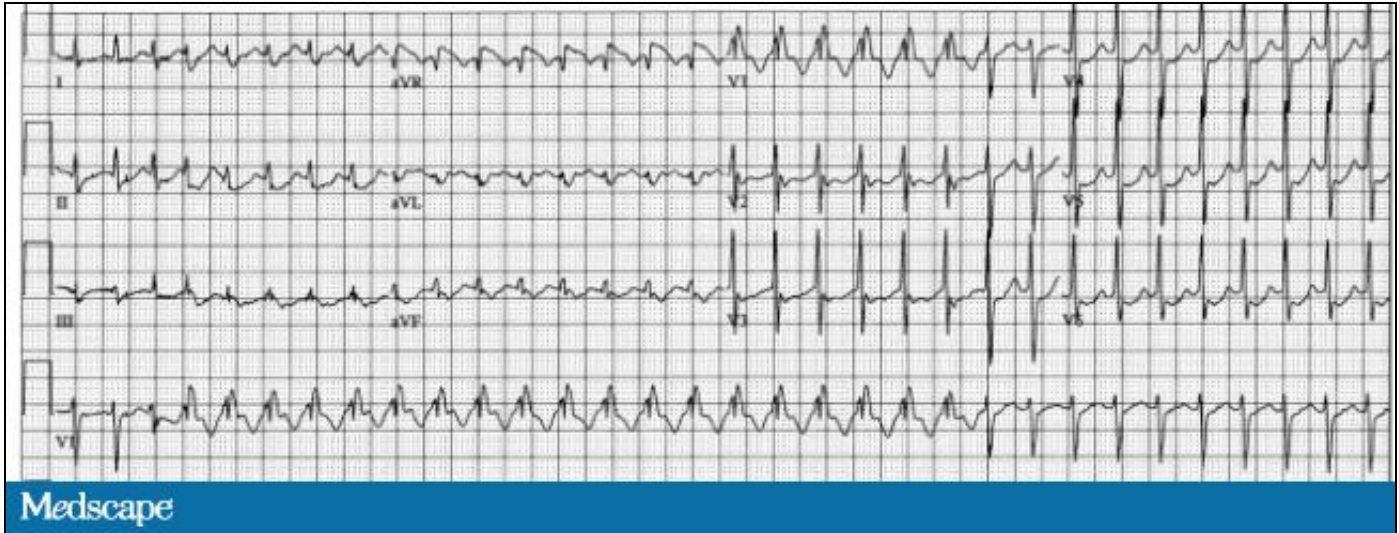


## Why Does the QRS Morphology Change?

Kyuhyun Wang, MD

Posted: 02/03/2012

### Question



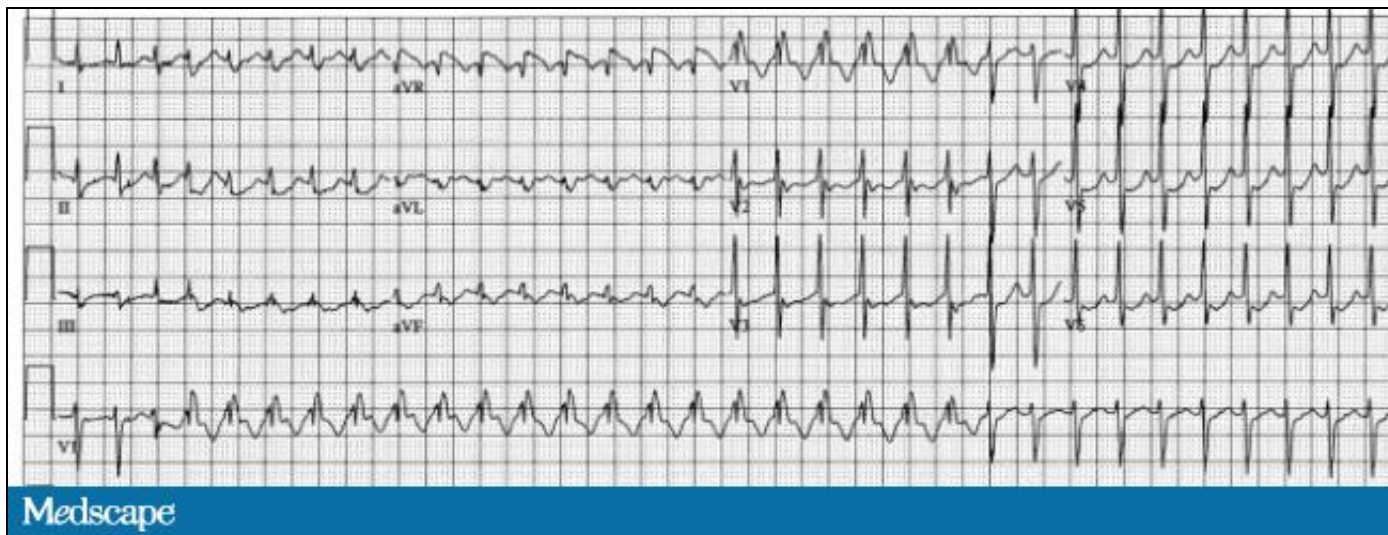
Note that especially in the V1 rhythm strip in the middle of the tracing, the QRS complexes are wider than and different from those at the beginning or in the latter part. What is happening? Choose one of the following:

- Ventricular tachycardia (VT) in the midst of supraventricular tachycardia (SVT)
- Aberrant conduction during SVT

Save and Proceed

### Answer

Aberrant conduction during SVT



### Discussion

A narrow QRS tachycardia is interposed by a wide QRS tachycardia, raising a possibility of VT during SVT. However, the rate stays the same, indicating that there is only 1 rhythm in this tracing, which is SVT. This is because the QRS can become wide if it is aberrantly conducted during SVT, but the wide QRS of VT cannot become narrow. Thus, this tracing shows aberrant conduction during SVT.

Medscape Cardiology © 2012 WebMD, LLC